



HANDBOOK FOR INTERNATIONAL STUDENTS

*Peaceful University, High-Quality
Education, Bright Future*

Contents

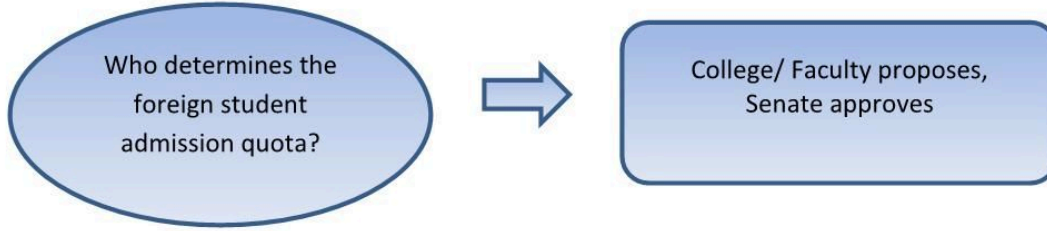
1. INTERNATIONAL STUDENT PROCEDURES	2
1.1. PROCEDURES REGARDING YÖK QUOTAS	2
1.2. PROCEDURES FOR INTERNATIONAL UNDERGRADUATE/ ASSOCIATE STUDENTS WITHOUT SCHOLARSHIP	3
1.3. PROCEDURES REGARDING NON-SCHOLARSHIP POSTGRADUATE STUDENTS	14
1.4. PROCEDURES REGARDING INTERNATIONAL SCHOLARSHIP STUDENTS	21
1.5. PROCEDURES REGARDING INTERNATIONAL STUDENTS WHO WILL COMPLETE UNDERGRADUATE EQUIVALENCY	29
1.6. PROCEDURES REGARDING INCOMING INTERNATIONAL STUDENTS WITH THE STUDENT EXCHANGE PROGRAM	32
2. FREQUENTLY ASKED QUESTIONS	35
2.2. FREQUENTLY ASKED QUESTIONS ABOUT REGISTRATION AND REGISTRATION RENEWAL OF INTERNATIONAL STUDENTS IN ASSOCIATE AND UNDERGRADUATE PROGRAMS	38
2.3. 2.3. FREQUENTLY ASKED QUESTIONS ABOUT INTERNATIONAL STUDENTS AFTER REGISTRATION TO ASSOCIATE AND UNDERGRADUATE PROGRAMS	39
2.4. FREQUENTLY ASKED QUESTIONS ABOUT THE ACCEPTANCE OF INTERNATIONAL STUDENTS IN GRADUATE PROGRAMS	39
2.5. FREQUENTLY ASKED QUESTIONS ABOUT ENROLLMENT AND REGISTRATION OF INTERNATIONAL STUDENTS PARTICIPATING IN GRADUATE PROGRAMS	40
2.6. FREQUENTLY ASKED QUESTIONS ABOUT INTERNATIONAL STUDENTS THAT WILL STUDY UNDERGRADUATE OF EQUIVILANCE	41
2.7. FREQUENTLY ASKED QUESTIONS ABOUT INTERNATIONAL STUDENTS THAT CAME WITH THE STUDENT EXCHANGE PROGRAM	41
2.8. FREQUENTLY ASKED QUESTIONS ABOUT HOUSING, RESIDENCE, HEALTH PROCEDURES OF INTERNATIONAL STUDENTS	42
2.9. FREQUENTLY ASKED QUESTIONS ABOUT LATERAL TRANSFER OF INTERNATIONAL STUDENTS	43
2.10. FREQUENTLY ASKED QUESTIONS ABOUT GRADUATION/DISENROLLMENT OF INTERNATIONAL STUDENTS	43

1. INTERNATIONAL STUDENT PROCEDURES

1.1. PROCEDURES REGARDING YÖK QUOTAS

PROCEDURES

RELEVANT DEPARTMENT



Did you know that you can learn about the YÖS quotas of our university **online?**

What you need to do to learn YÖS quotas:

Follow the website of the Directorate of Student Affairs

Review quota announcements carefully when they are published

Form your preferences by reviewing the quotas

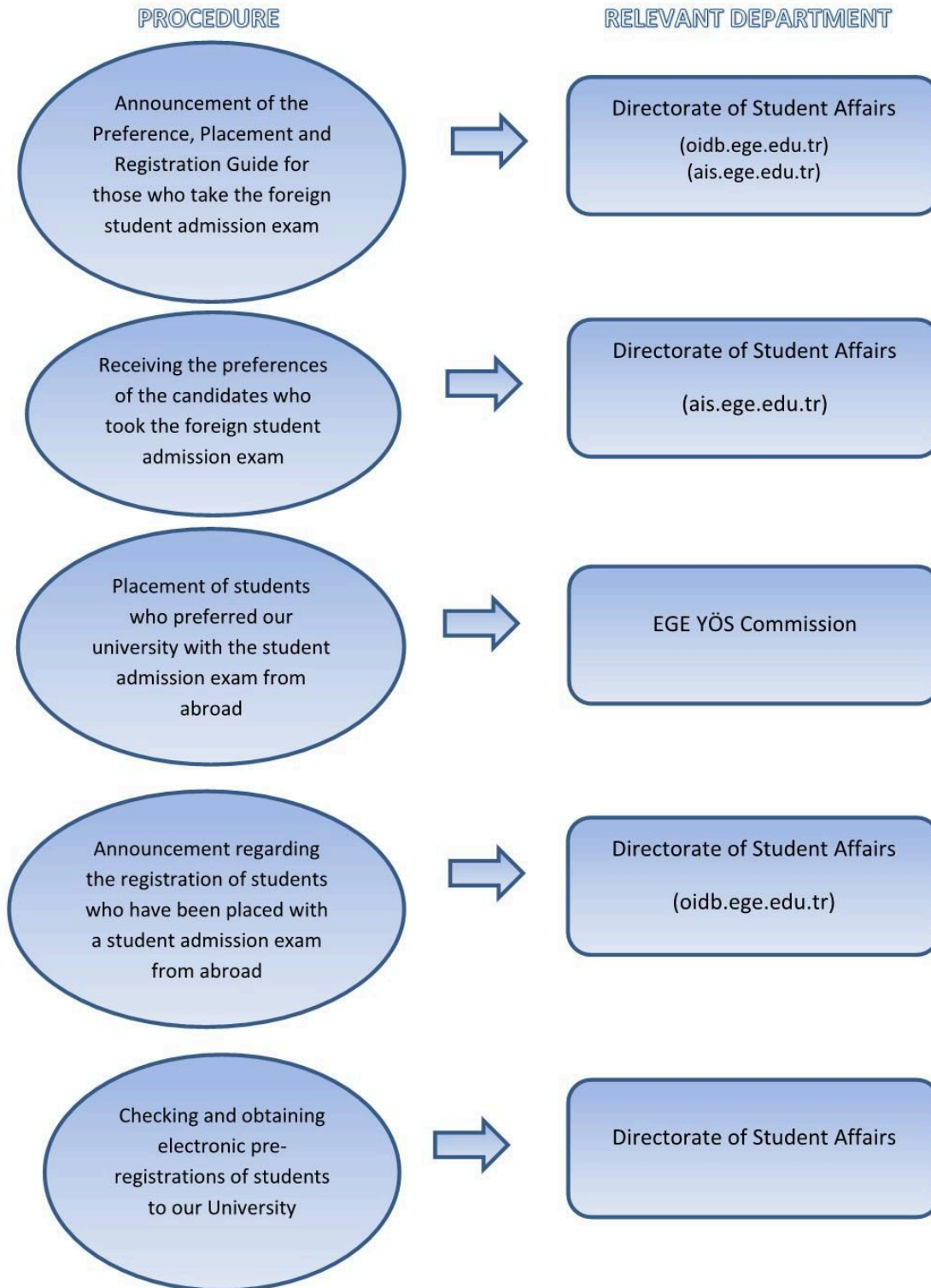


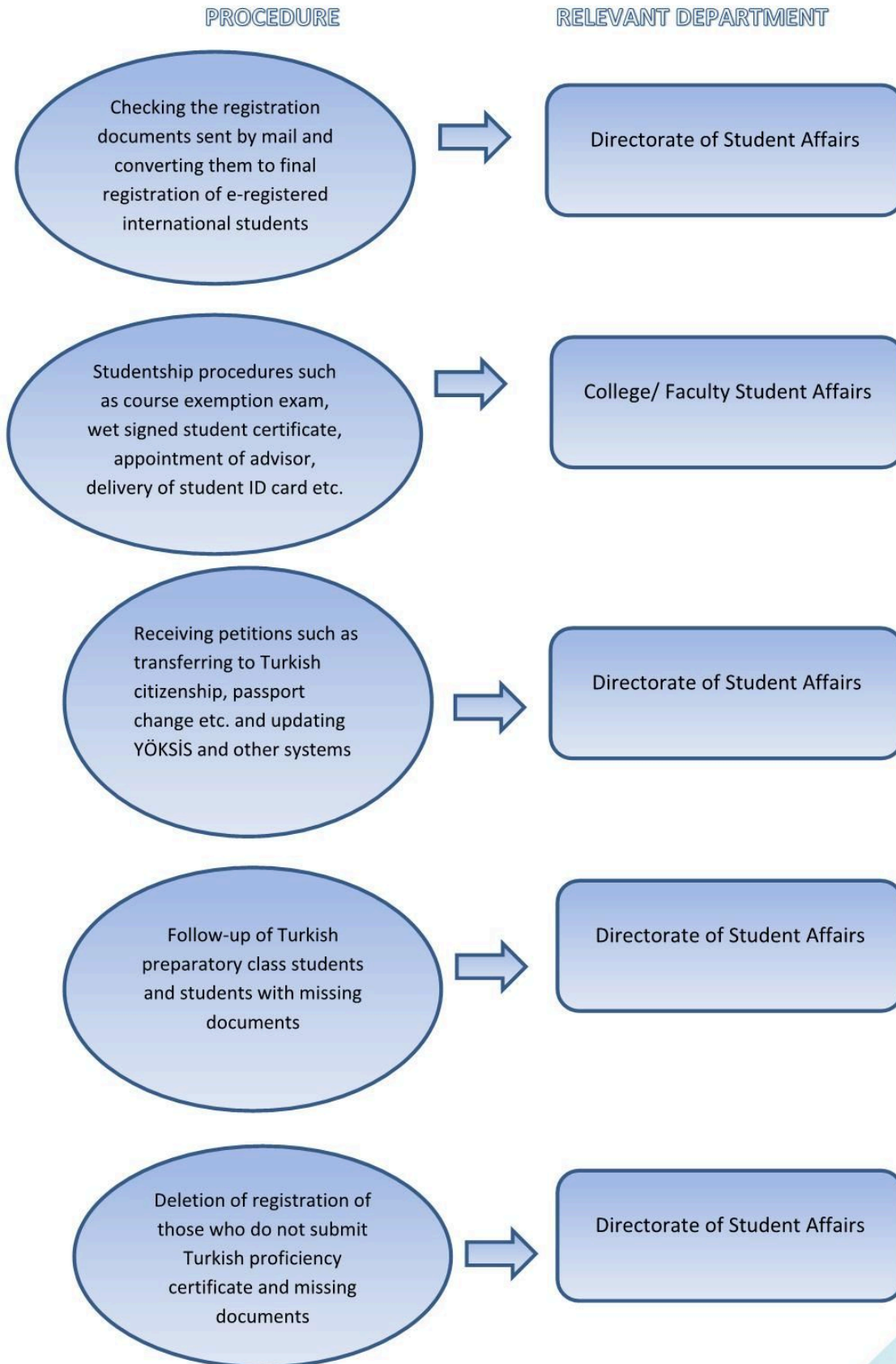
Keep in mind:

You should carefully review the special conditions of the quotas

Do not take into account information sources other than Ege University

1.2. PROCEDURES FOR INTERNATIONAL UNDERGRADUATE/ ASSOCIATE STUDENTS WITHOUT SCHOLARSHIP







Did you know that **you can learn about our university's admission requirements and preference period online?**

What to do:

Carefully read the "EGEYOS Preference and Placement Guide" published on the website of the Directorate of Student Affairs (<https://oidb.ege.edu.tr/tr-16423/klavuzlar.html>)

If you have a dual nationality, one of which is Turkish, contact the Population Directorate and find out if you are a foreign national by birth.

Make your preferences from the web pages specified in the guide on the application dates.



Keep in mind:

If you have dual nationality, one of which is Turkish nationality, you need to take copy of the Certificate of Identity Registration, the document you receive should indicate that you are a Turkish citizen afterwards.

Students who meet the application requirements during the selection period can make a choice. Therefore, you must meet the application requirements during the preference period.

After making your preferences, you should see the notification that your application has been received on the screen.



Did you know that after electronic registration, you need to send the original documents by cargo?

What you need to do to complete the registration process:

Read the registration guide carefully and send your documents to the specified postal address on the specified dates.

Track whether your documents have reached the Directorate of Student Affairs

Check your student status on the student information system (kimlik.ege.edu.tr).



Keep in mind:

Remember that you are responsible for shipping delays and problems such as delivery to the wrong address.

As long as you have missing documents, you cannot continue your education and receive a document.

If the original documents do not reach the ÖİDB on the dates specified in the guide, your registration **will be deleted**.



Did you know what you need to do about **High school equivalency certificate?**

What to do:

If you are residing abroad, apply the embassies of the Republic of Turkey to obtain an equivalence certificate

If you reside in Turkey, apply through the e-equivalence system (edenklik.meb.gov.tr). Contact the Directorate of Student Affairs (ÖİDB) about what to do after making an

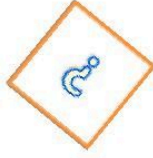
After you receive your equivalence certificate, submit it to the ÖİDB along with the other documents given to you.



Keep in mind :

In the Equivalence Certificate, there should be a statement stating that the high school education you have completed is considered equivalent to the high school education in Turkey.

*If the Equivalence document is not delivered within the time given during registration, **your registration will be deleted.***



Did you know that you should apply to **Directorate of Student Affairs** after getting a residence permit?

What to do:

Learn the application process on the website <https://www.goc.gov.tr>

Apply to the Provincial Immigration Administration for a residence permit as soon as possible after logging in.

Submit the double-sided copy of the residence permit to the Directorate of Student Affairs.



Keep in mind:

As long as the residence permit is missing, you cannot continue your education, you cannot benefit from the student discount in transportation.

Make sure you have a valid health insurance, as health insurance is required for the residence permit.

The student certificate is obtained through the identity system (kimlik.ege.edu.tr). If the institution wants a wet signed student certificate, you should contact **the School/ Faculty/ Institute**.



Did you know what to do in case of passport, residence address or name change?

What to do:

Provide proof of residence or name change, your new passport.

Apply to the Directorate of Student Affairs with the document showing the

After filling and signing the petition given by the Department, submit the petition



Keep in mind:

In case of change of passport and address, you must present your new passport and a document showing your new address.

In case of a name change, you must provide the official document showing the old and new versions of the name.

If the document is in a foreign language, you must have it translated into Turkish by the notaries in Turkey or the Turkish embassy.



Did you know what to do in order to get your student certificate?

What to do:

Come to the Directorate of Student Affairs and complete the registration

If you are a Turkish preparatory class student, after registering at the Turkish language centers of universities, apply for a document after choosing a foreign language preparatory class or a 1st year course.

After logging in to the kimlik.ege.edu.tr system, log in to the Student Document Application system and select the document type and the document language and confirm.



Keep in mind:

The student certificate is obtained through the identity system (kimlik.ege.edu.tr). If the institution wants a wet signed student certificate, you should contact the **School/ Faculty/ Institute**.

In order for you to choose a course through the ID system, an advisor must be appointed and you must not have any missing documents.



Did you know that you must submit your Turkish proficiency certificate to continue your education?

If you have a Turkish proficiency certificate, submit it to the Directorate of Student Affairs while registering.

What to do:

If you don't have a certificate, enroll in a University's Turkish Language Center.

Submit your certificate to the Directorate of Student Affairs after you finish your Turkish preparatory education.



Keep in mind:

You must submit your Turkish proficiency certificate to start your education.

Your level of Turkish language must be at least C1 for Turkish proficiency.

If you fail in the first year, **your registration will be deleted** unless you submit your certificate of C1 Turkish at the end of 2nd year.



Did you know that you must fill out and submit a graduate information form after graduation?

What to do:

Visit the Türkiye Mezunları Portalı
(turkiyemezunlari.gov.tr) after graduating.

Create your graduate information form by filling in the necessary areas.

Print your form and submit it to the student administration office of your Vocational School/Faculty/Institute.



Keep in mind:

You must provide the necessary information to create the document.

You must print the graduate information form after creating it.



Do you know what you need to do **about accommodation?**

What to do:

If you are going to study with your own means, you may benefit from the Student Village, private dormitories, or the facilities you choose.

Visit ogrencikoyu.ege.edu.tr for more information about the Student Village of Ege University.

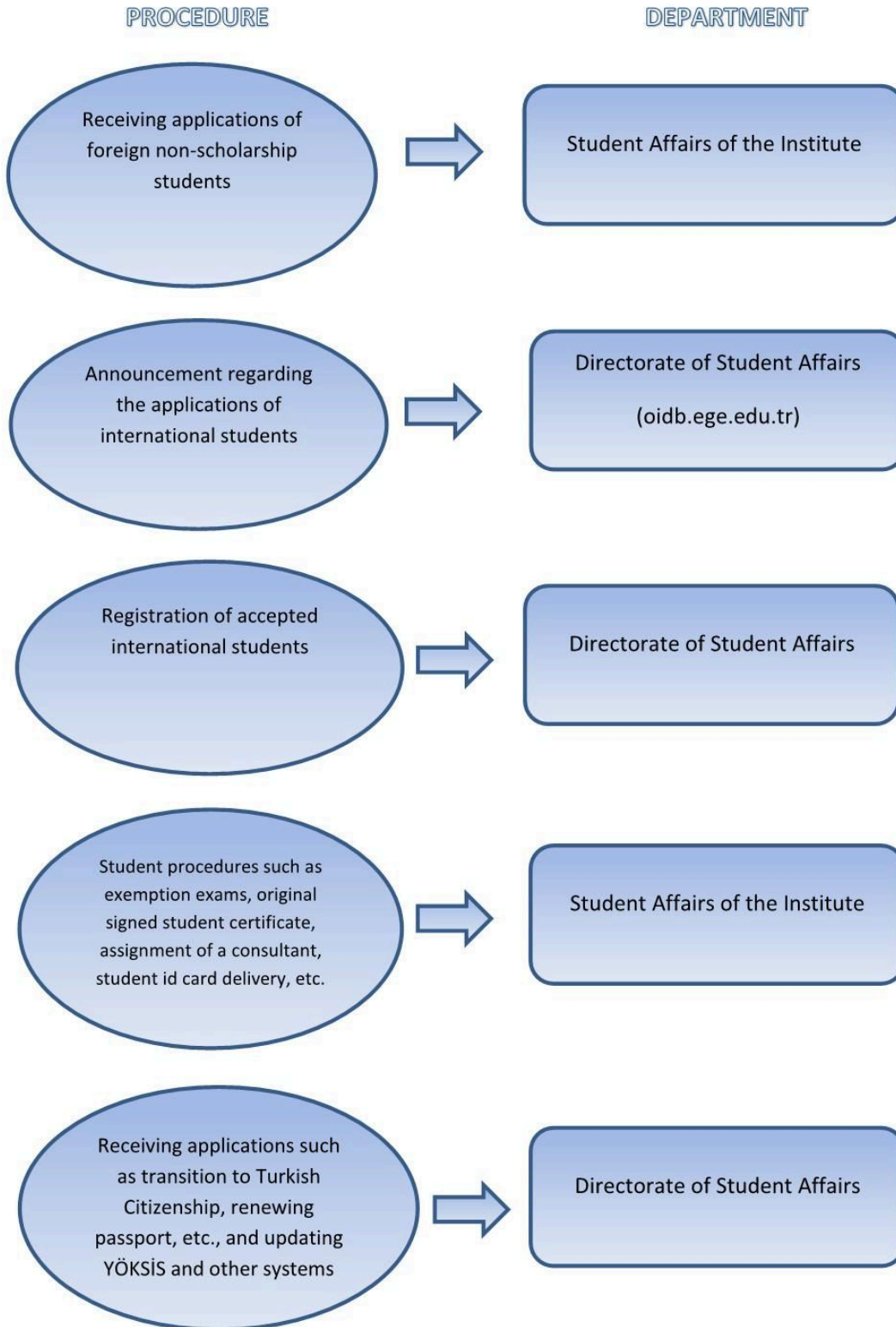


Keep in mind:

There are two dormitories including a state dormitory and a private dormitory, and the Student Village of Ege University on campus.

If you are going to study with your own means, the responsibility of accommodation is yours.

1.3. PROCEDURES REGARDING NON-SCHOLARSHIP POSTGRADUATE STUDENTS





Do you know what to do **during postgraduate registration?**

What to do:

Check the registration announcements on the websites of the Directorate of Student Affairs and Institutes.

Complete the documents on the registration of international students stated in the registration guide.

Submit your documents to the Directorate of Student Affairs after registering online.



Keep in mind:

You should carefully read the Registration Guide as you will be asked for a certificate of recognition or equivalence depending on the field you are applying for.

The required recognition and equivalence certificate should be issued in your name.

Documents in foreign languages must be translated into Turkish. Translations must be as specified in the Registration Guide.



Did you know that you must inform the **Directorate of Student Affairs** after you become a Turkish citizen?

What to do:

Get your naturalization decree or the certificate of identity register copy from the civil registry.

Get a copy of both sides of your id as well and submit them to the Directorate of Student Affairs.

Fill and sign the form given by the Directorate and submit it along with the other documents.



Keep in mind:

It must be written clearly that you have acquired Turkish citizenship in the extract of civil registry.

Check if the date on the document you got from the civil registry is valid. If not, get a new one.

Check to see if the necessary information on the student information system (kimlik.ege.edu.tr) is updated.



Do you know what to do to get your student certificate?



What to do:

Go to the Directorate of Student Affairs and finish your registration procedures.

Apply for the document after registering in a University's Turkish language center if you are taking a Turkish preparatory year, and after you select courses if you are taking a foreign language preparatory year or if you are a junior.

After logging in kimlik.ege.edu.tr, enter the Student Certificate Application system and confirm after choosing the document type and document language.



Keep in mind:

*The student certificate is obtained through the student information system (kimlik.ege.edu.tr). If an organization asks for an original student certificate you must contact **the Vocational School/Faculty/Institute.***

You must have a consultant assigned and submit all your documents to be able to register for classes on the student information system.



Did you know that you must apply to **the Directorate of Student Affairs** after getting a residence permit?

What to do:

Check the application process at <https://www.goc.gov.tr>

You must apply to the Provincial Immigration Management for a residence permit as soon as possible after logging in.

Print both sides of your residence permit and submit it to the Directorate of Student Affairs.



Keep in mind:

You cannot continue your education or benefit from the student discount on public transportation if the residence permit is missing.

Make sure you have a valid health insurance as it is necessary for receiving a residence permit.

The student certificate is obtained through the student information system (kimlik.ege.edu.tr). If an organization asks for a signed student certificate you must contact the **Vocational School/Faculty/Institute**.



Did you know that you must fill out and submit a graduate information form after graduation?

What to do:

Visit the *Türkiye Mezunları Portalı* (turkiyemezunlari.gov.tr) after graduation.

Create your graduate information form by filling in the necessary areas.

Print your form and submit it to the student administration office of your Vocational School/Faculty/Institute.



Keep in mind:

You must provide the necessary information to create the document.

You must print the graduate information form after creating it.



Do you know what you need to do **about accommodation?**

What to do:

If you are going to study with your own means, you may benefit from the Student Village, private dormitories, or the facilities you choose.

Visit ogrencikoyu.ege.edu.tr for more information about the Student Village of Ege University.

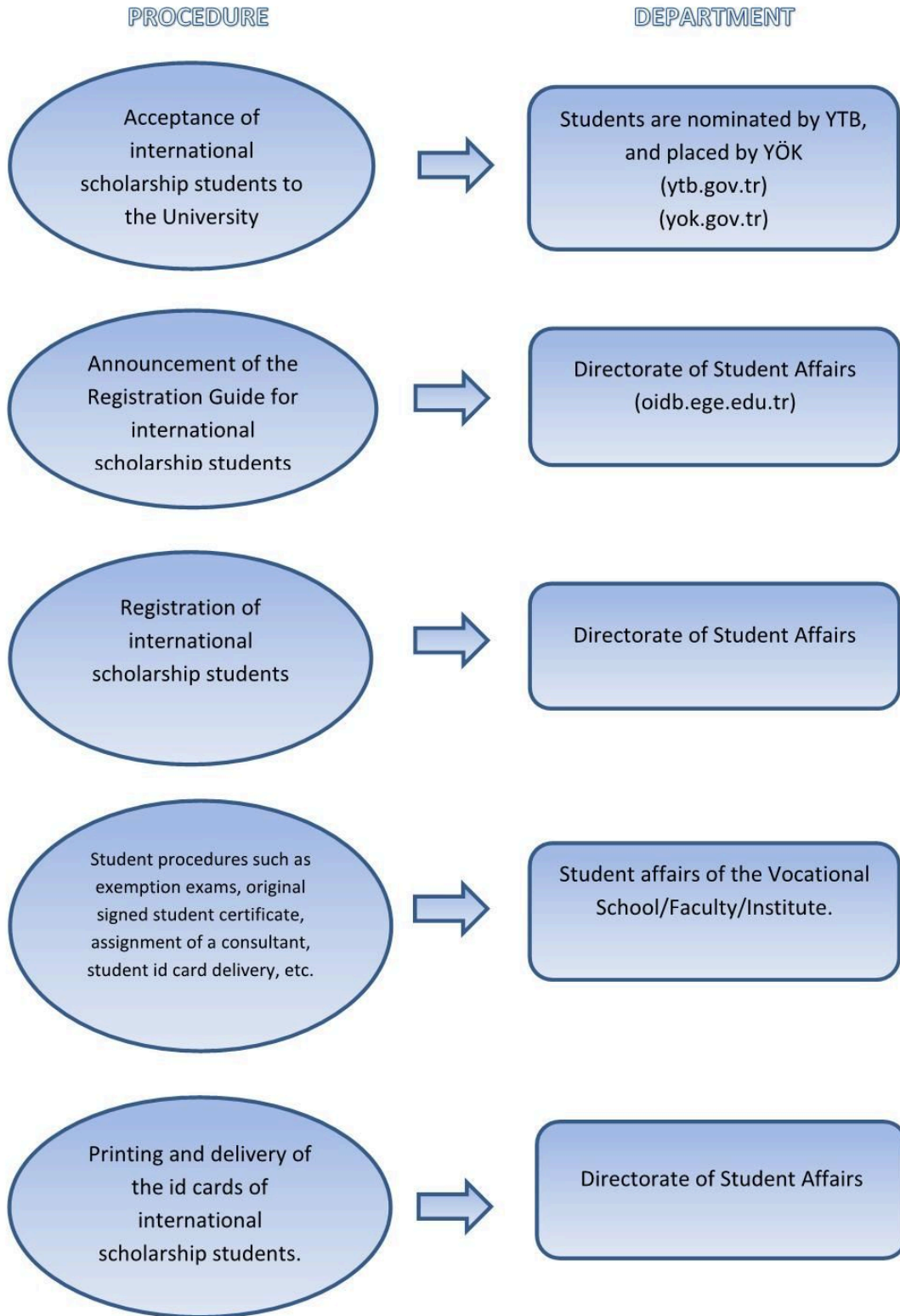


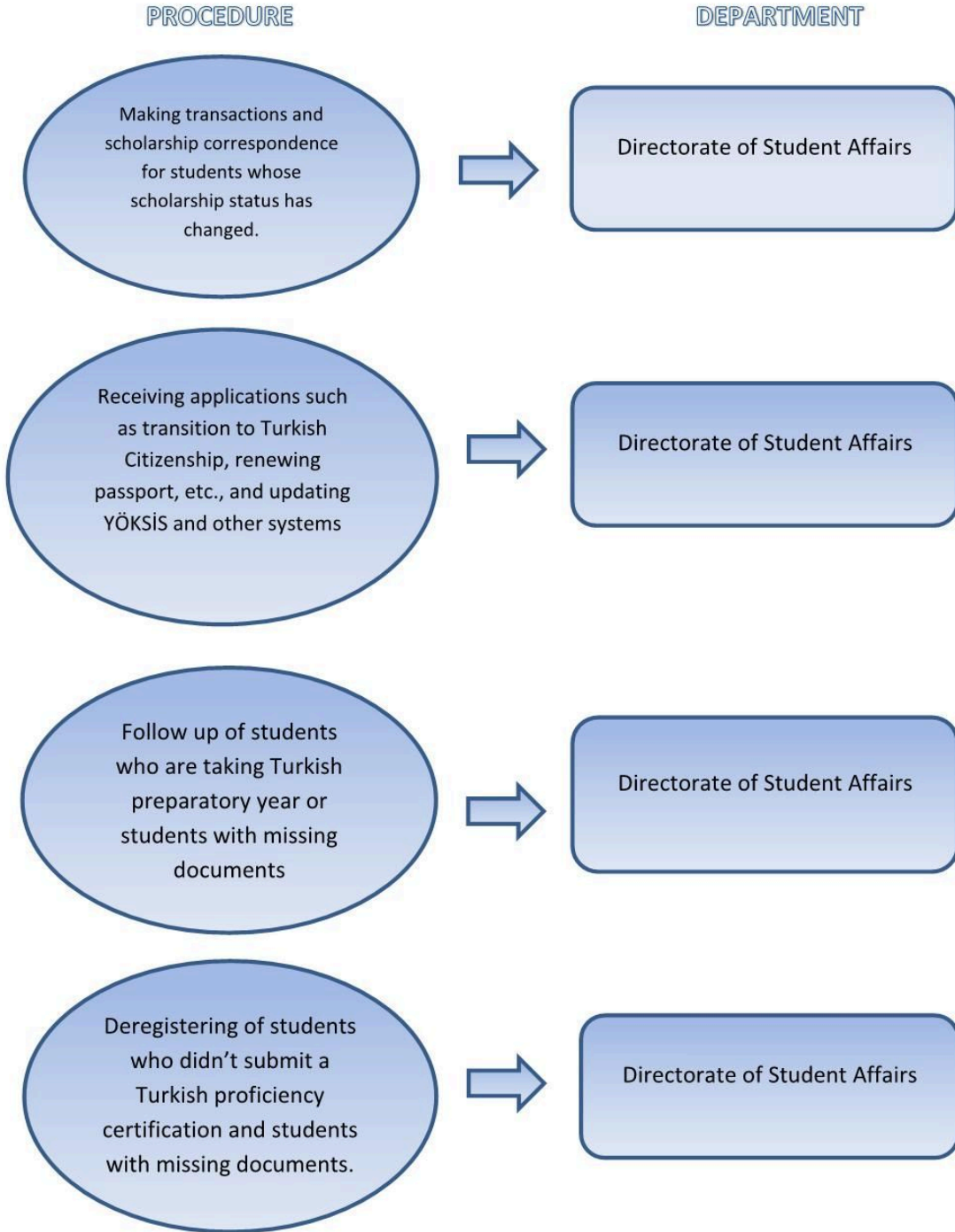
Keep in mind:

There are two dormitories including a state dormitory and a private dormitory, and the Student Village of Ege University on campus.

If you are going to study with your own means, the responsibility of accommodation is yours.

1.4. PROCEDURES REGARDING INTERNATIONAL SCHOLARSHIP STUDENTS







Do you know how to **start your education after getting a scholarship?**

What to do:

Check the announcements made by YÖK (yok.gov.tr) or YTB (ytb.gov.tr).

Read the Registration guide announced by the Directorate of Student Affairs.

Contact OİDB for registration



Keep in mind:

Check the cancellation and suspension terms in the scholarship provisions.

You must take Turkish preparatory education if you don't have a Turkish proficiency certificate upon registration.

You will be deregistered if you don't submit your Turkish proficiency certificate or missing documents in time.



Do you know what to do to get your student certificate?



What to do:

Go to the Directorate of Student Affairs and finish your registration procedures.

Apply for the document after registering in a University's Turkish language center if you are taking a Turkish preparatory year, and after you select courses if you are taking a foreign language preparatory year or if you are a junior.

After logging in kimlik.ege.edu.tr, enter the Student Certificate Application system and confirm after choosing the document type and document language.



Keep in mind:

*The student certificate is obtained through the student information system (kimlik.ege.edu.tr). If an organization asks for an original student certificate you must contact **the Vocational School/Faculty/Institute.***

You must have a consultant assigned and submit all your documents to be able to register for classes on the student information system.



Did you know that you must submit your Turkish proficiency certificate to continue your education?

What to do:

If you have a Turkish proficiency certificate, submit it to the Directorate of Student Affairs while registering.

*If you don't have a certificate, enroll in a **University's Turkish Language Center**.*

Submit your certificate to the Directorate of Student Affairs after you finish your Turkish preparatory education.



Keep in mind:

You must submit your Turkish proficiency certificate to start your education.

Your Turkish level must be at least C1 for Turkish proficiency.

*If you fail in the first year, **your registration will be deleted** unless you submit your certificate of C1 Turkish at the end of 2nd year.*



Did you know what to do about High School Diploma Equivalency Certificate?

What to do:

If you reside abroad, apply to Türkiye Republic Embassies to get your Equivalency Certificate.

If you reside in Türkiye, apply from the E-Denklik system (edenklik.meb.gov). Contact to **Directorate of Student Affairs** about what to do after getting your appointment

After getting your equivalency certificate, submit it to Student Affairs along with other documents that are required.



Keep in mind:

High school diploma equivalency certificate should be obtained only by **associate degree/undergraduate** students.

There must be a statement in your equivalence certificate that indicates the high school education that you completed is equivalent to Türkiye's high school education.

If you don't hand in your equivalence certificate in the registration period, your **registration will be deleted**.



Did you know that you must apply to **the Directorate of Student Affairs** after getting a residence permit?

What to do:

Check the application process at <https://www.goc.gov.tr>

You must apply to the Provincial Immigration Management for a residence permit as soon as possible after logging in.

Print both sides of your residence permit and submit it to the Directorate of Student Affairs.



Keep in mind:

You cannot continue your education or benefit from the student discount on public transportation if the residence permit is missing.

Make sure you have a valid health insurance as it is necessary for receiving a residence permit.

The student certificate is obtained through the student information system (kimlik.ege.edu.tr). If an organization asks for a signed student certificate you must contact the **Vocational School/Faculty/Institute**.



Did you know that you must fill out and submit a graduate information form after graduation?

What to do:

Visit the *Türkiye Mezunları Portalı* (turkiyemezunlari.gov.tr) after graduating.

Create your graduate information form by filling in the necessary areas.

Print your form and submit it to the student administration office of your Vocational **School/Faculty/Institute**.

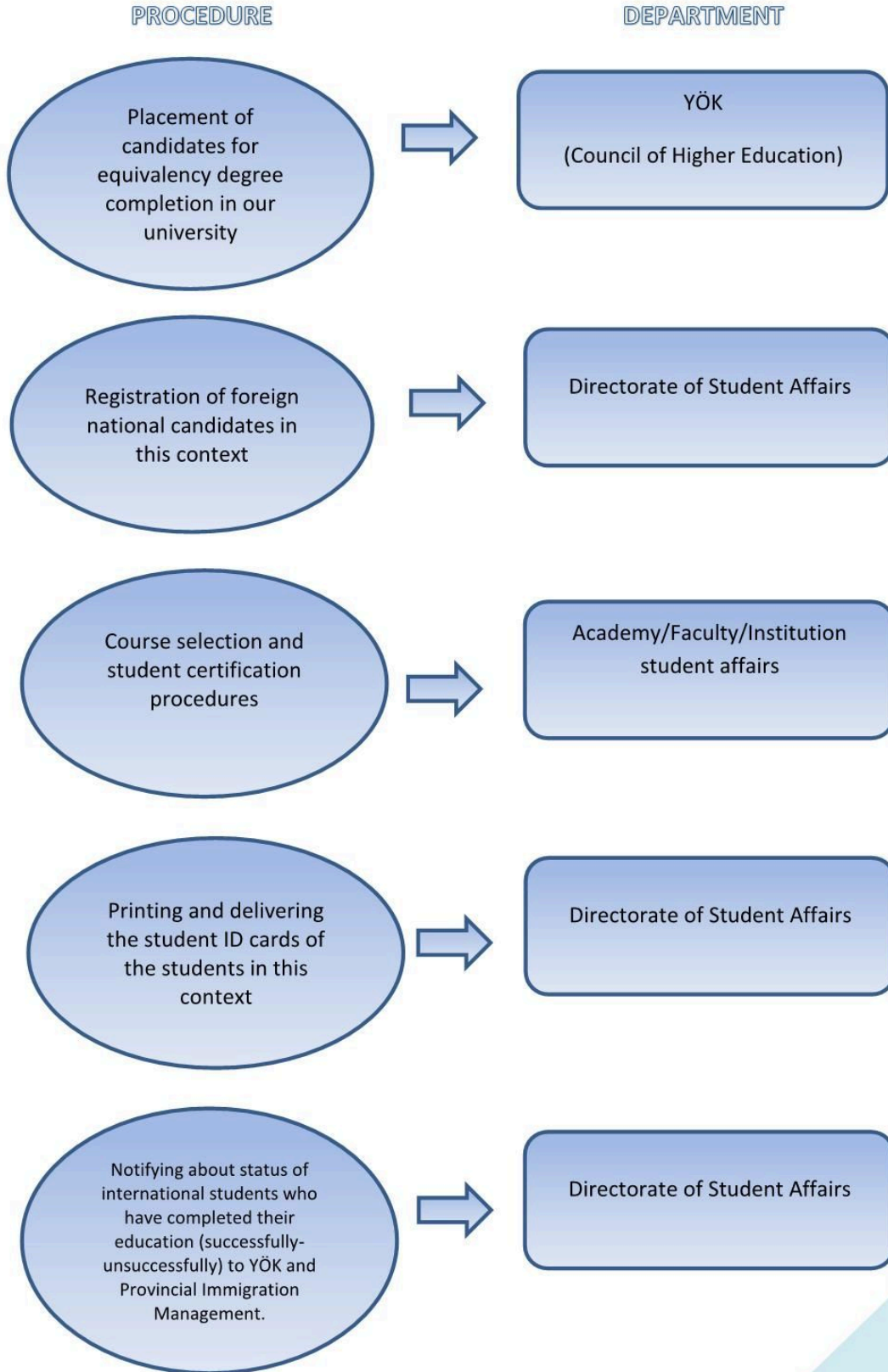


Keep in mind:

You must provide the necessary information to create the document.

You must print the graduate information form after creating it.

1.5. PROCEDURES REGARDING INTERNATIONAL STUDENTS WHO WILL COMPLETE UNDERGRADUATE EQUIVALENCY





Did you know how to start your equivalency degree completion education?

What to do:

Verify if the Directorate of Student Affairs has received the official text submitted by YÖK.

Contact the Directorate of Student Affairs to learn about your registration documents, then acquire information about the term from the faculty/institute.

Before the term begins, come to the Directorate of Student Affairs and complete your registration.



Keep in mind:

You must deposit the required fee for the equivalency degree education before you begin your education.

Equivalency degree education terms take place at specific intervals. You must be aware of the enrollment time and enroll accordingly.

After you have finished your education, begin the discharge procedure and provide your YU number to the Directorate of Student Affairs.



Did you know that you must apply to **the Directorate of Student Affairs** after getting a residence permit?

What to do:

Check the application process at <https://www.goc.gov.tr>

You must apply to the Provincial Immigration Management for a residence permit as soon as possible after logging in.

Print both sides of your residence permit and submit it to the Directorate of Student Affairs.

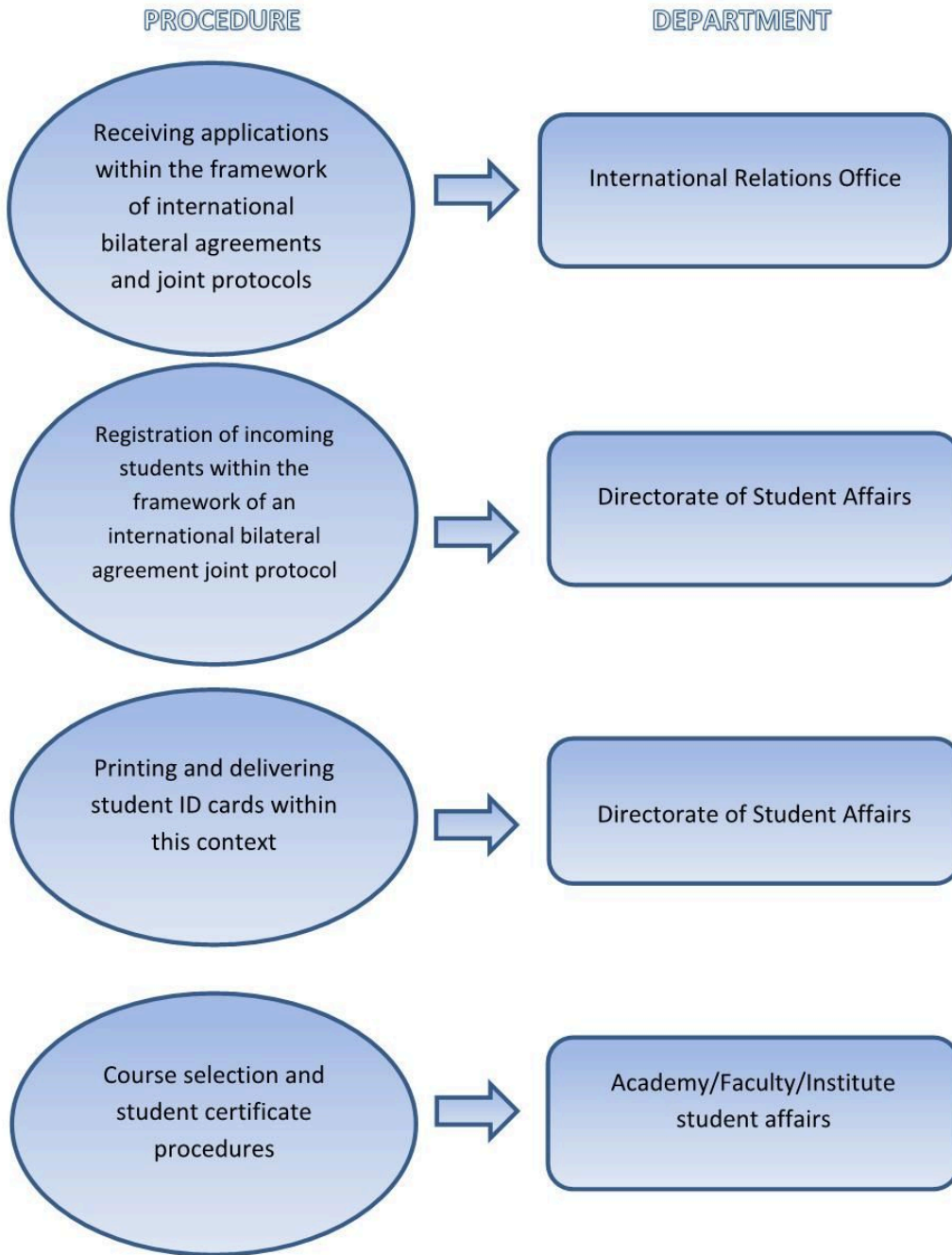


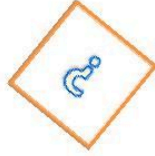
Keep in mind:

You cannot continue your education or benefit from the student discount on public transportation if the residence permit is missing.

Make sure you have a valid health insurance as it is necessary for receiving a residence permit.

1.6. PROCEDURES REGARDING INCOMING INTERNATIONAL STUDENTS WITH THE STUDENT EXCHANGE PROGRAM





Did you know that you must apply to **the Directorate of Student Affairs** after getting a residence permit?

What to do:

Check the application process at <https://www.goc.gov.tr>

You must apply to the Provincial Immigration Management for a residence permit as soon as possible after logging in.

Print both sides of your residence permit and submit it to the Directorate of Student Affairs.



Keep in mind:

You cannot continue your education or benefit from the student discount on public transportation if the residence permit is missing.

Make sure you have a valid health insurance as it is necessary for receiving a residence permit.

You should contact the **International Relations Office** for the student certificate.



Do you know what you need to do to get your student certification?

What to do:

If you are not an Erasmus student, come to the Directorate of Student Affairs and complete the registration process.

Make your course selection by talking to your academic consultant

After making your course selection, contact the International Relations Office and get your student certificate.



Keep in mind:

*You should contact the **International Relations Office** for your student certificate.*

You should first contact your academic consultant after registration since the course selection will be made through an academic consultant.

2. FREQUENTLY ASKED QUESTIONS

2.1. FREQUENTLY ASKED QUESTIONS ABOUT INTERNATIONAL STUDENT ADMISSION TO ASSOCIATE AND UNDERGRADUATE PROGRAMS

1.) Which exams are accepted for the application of international students to your university for associate and undergraduate programs?

Any of the TR-YÖS or EGEYÖS exam results are accepted for placements in associate and undergraduate programs at our university. EGEYÖS is administered by Ege University and you can find details about the exam at www.yos.ege.edu.tr ; TR-YÖS is administered by ÖSYM and you can find the details of the exam at www.osym.gov.tr.

2.) When are EGEYÖS and TR-YÖS held?

EGEYÖS is held on the dates announced by our University at www.yos.ege.edu.tr.

TR-YÖS is held on the dates announced by ÖSYM at www.osym.gov.tr.

3.) How long are EGEYÖS and TR-YÖS scores valid?

At our university; only EGEYÖS and TR-YÖS scores of the year of placement are valid.

4.) How can I apply for EGEYÖS or TR-YÖS?

Applications are made at www.yos.ege.edu.tr for EGEYÖS and at www.osym.gov.tr for TR-YÖS.

5.) What subjects do EGEYÖS and TR-YÖS cover?

You can find the exam topics and information about the exam at www.yos.ege.edu.tr for EGEYÖS, and the Exam Guide at www.osym.gov.tr for TR-YÖS. For your EGEYÖS questions, you can contact us at odm@mail.ege.edu.tr.

6.) What are the application requirements for international student admission to associate and undergraduate programs?

Provided that they are in the last year of high school or have graduated and they have the EGEYÖS or TR-YÖS exam results of the relevant year, ; applications of these people are accepted:

(a) who is a foreign national,

(b) who have lost their Turkish citizenship by obtaining permission to renounce their Turkish citizenship and those who document that they have a blue card, which is given upon their request,

(c) who acquired Turkish citizenship after being a foreign national/therefore have dual nationality,

(d) Among the students of Turkish nationality, those who certify that they have been in a foreign country other than TRNC, where they received their high school education in the years corresponding to their high school education; (including those who have completed all of their secondary education (high school) in Turkish schools opened by the Ministry of National Education in a foreign country other than TRNC),

(e) Those who are TRNC nationals, residing in the TRNC and have completed their secondary education (high school) in the TRNC and have the General Certificate of Education Advanced Level (GCE AL) exam results.

(f) Those who graduate from the Open Education High School abroad program affiliated to the Ministry of National Education by certifying that they have been in the relevant country in the years coinciding with their high school education will also be able to apply for foreign student admission quotas.

7.) What should I pay attention to for placement preferences?

While making a list of placement preferences, candidates should check whether they meet the application requirements from the link

[https://oidb.ege.edu.tr/files/oidb/icerik/yonerge_web%20Sayfasi\(1\).pdf](https://oidb.ege.edu.tr/files/oidb/icerik/yonerge_web%20Sayfasi(1).pdf). Otherwise, the exam scores will not qualify. Candidates placed in a program should make their program choices carefully as they will lose their preference for subsequent placements.

8.) Where can I find out about the quota for international students?

You can find our university's international student quotas in the "international students" section under the "student" heading at www.oidb.ege.edu.tr.

9.) What are your programs that are in 100% foreign language at your university?

Our Undergraduate Programs in English Language;

Computer Engineering	Bioengineering	Leather Engineering	Chemical Engineering
Electrical And Electronic Engineering	Food Engineering	Civil Engineering	Chemical Engineering

Mechanical Engineering	Textile Engineering	English Literature and Language	American Culture and Literature
English Translation & Interpreting			

Our Undergraduate Programs in English Language;

German language and literature	German Translation & Interpreting
--------------------------------	-----------------------------------

You can find detailed information on the language of the programs under "Learning Languages of Our Programs" subheading under "Student" heading at www.oidb.ege.edu.tr.

10.) What should be done after the exam?

Candidates who pass the EGEYÖS or TR-YÖS exams can make their choices on the dates specified in the "Preference, Placement and Registration Guide for International Students" (published on the website <https://oidb.ege.edu.tr>). There are 3 placements at our university, and candidates can make 5 choices for each placement.

Candidates who choose programs that provide education in a foreign language (English Language and Literature, American Culture and Literature, German Language and Literature, Translation and Interpretation programs, Tourism Guidance) must also pass the Foreign Language proficiency exam on the dates announced in the "Preference, Placement and Registration Guide for International Students".

In programs that accept students with a special talent score, students must also be successful in the special talent exam of the relevant school. Students in this group can learn the special talent exam schedule by contacting the relevant school.

11.) What are your score requirements to be placed in any program at your university?

For Associate and Undergraduate programs, candidates should get at least 200 points from either EGEYÖS or TR-YÖS.

For foreign language education programs, candidates must also have obtained at least 70 points out of 100 as a result of the Foreign Language Proficiency Exam or sufficient points from the exams that are considered equivalent to this exam that will be accepted by the School of Foreign Languages.

For placements to programs that accept students with a special talent exam, it is necessary to have a Mixed Talent Score result of 200 points or more, which is calculated by taking 40% of the EGEYÖS or TR-YÖS and 60% of the special talent exam result to be made by the relevant unit.

12.) Can I use the EGEYÖS score at other universities?

You can access the list of universities that accept students with EGEYÖS score at www.yos.ege.edu.tr.

2.2. FREQUENTLY ASKED QUESTIONS ABOUT REGISTRATION AND REGISTRATION RENEWAL OF INTERNATIONAL STUDENTS IN ASSOCIATE AND UNDERGRADUATE PROGRAMS

1) How can I check the placement results for associate/undergraduate programs?

It is published in the “Announcements” section at www.oidb.ege.edu.tr on the date specified in the “Preference, Placement and Registration Guide for International Students.”

2.) I was placed in the associate/undergraduate program of your university. How can I register?

Candidates who are placed in any program at the associate degree/undergraduate level of our university register on the dates specified in “Preference, Placement and Registration Guide for International Students” announced at www.oidb.ege.edu.tr and as specified in this guide.

3.) How can I renew my registration?

Registration renewal (course selection) is done at www.kimlik.ege.edu.tr on the dates specified in the academic calendar. International students can log in to the ID system by typing their student number in both fields. In addition, information about the registration renewal process can be obtained from the registration guides or from the registration renewal announcements at www.oidb.ege.edu.tr of the Registrar's Office.

2.3. 2.3. FREQUENTLY ASKED QUESTIONS ABOUT INTERNATIONAL STUDENTS AFTER REGISTRATION TO ASSOCIATE AND UNDERGRADUATE PROGRAMS

1.) How can I get my student certificate?

The student certificate is obtained online through the www.kimlik.ege.edu.tr student system after the registration renewal process. For your student documents that require a wet signature, you should apply to the student affairs of the academic unit you are registered to.

2.) Where do I get my high school diploma equivalency certificate after registration?

Appointments can be made on the e-denklik website of the Directorate of National Education (<https://edenklik.meb.gov.tr/>). On the day and time of the appointment, the high school diploma, transcript and Turkish translations and documents requested by the Directorate of National Education are processed at the Equivalency Unit of the Directorate of National Education.

3.) Where should I apply in case of a change of information (passport, residence address, name change, etc.) while I am a student?

You must apply to the Registrar's Office with your document showing the change in status.

4.) What should I do when I acquire Turkish citizenship?

You must apply to the Directorate of Student Affairs with a photocopy of your Proof of Identity Registration and T.C. ID card copy.

2.4. FREQUENTLY ASKED QUESTIONS ABOUT THE ACCEPTANCE OF INTERNATIONAL STUDENTS IN GRADUATE PROGRAMS

1.) What is the language of education of your graduate programs?

You can get information about the languages of education of our graduate programs from the link <https://oidb.ege.edu.tr/tr-6713/lisansustu.html> or from our University Institutes.

2.) I want to get a master's/doctorate degree at your university, what should I do?

Since master's and doctorate applications are made directly to the Institutes at our university, you need to contact the relevant Institute. Web addresses of our institutes;

For Masters and PhD in Science <https://fenbilimleri.ege.edu.tr/>

For Masters and PhD in Health Sciences <https://sbe.ege.edu.tr/>

For Masters and PhD in Social Sciences <https://sosbilen.ege.edu.tr/>

For Masters and PhD in Educational Sciences <https://egitimbilimleri.ege.edu.tr/>

2.5. FREQUENTLY ASKED QUESTIONS ABOUT ENROLLMENT AND REGISTRATION OF INTERNATIONAL STUDENTS PARTICIPATING IN GRADUATE PROGRAMS

1.) I am participating in a graduate program at your university. How can I register?

Candidates who are participating in any program at the graduate level at our university register on the dates and as specified in the "Graduate Registration Procedures" announced in the announcements section of the www.oidb.ege.edu.tr page.

2.) I enrolled in a graduate program from the international student quota. How can I start the lessons?

An international student enrolled in a graduate program to study in their own means; After paying the tuition fee on the dates specified in the academic calendar, using the username and password (student number is also written in the password section at the first login) at www.kimlik.ege.edu.tr, performs the registration renewal (course selection) process via the OBYS link. In addition, information about the registration renewal process can be obtained from the registration guides of the Directorate of Student Affairs at the website www.oidb.ege.edu.tr or from the registration renewal announcements.

3.) How can I find information about the tuition fees of international students in graduate programs?

Tuition fees for all programs are paid in two annual installments. For detailed information on this subject, you can check the link http://oidb.ege.edu.tr/files/oidb/icerik/ogrenim_ucreleri.pdf.

2.6. FREQUENTLY ASKED QUESTIONS ABOUT INTERNATIONAL STUDENTS THAT WILL STUDY UNDERGRADUATE OF EQUIVILANCE

1.) I am an international student placed in your University for Equivalence Undergraduate Completion training, what should I do for registration?

First of all, you can find out whether your placement letter has reached our Directorate, by asking specifying your placement information at our mail address oidb@mail.ege.edu.tr, you can get information about the required documents for registration from the website https://oidb.ege.edu.tr/files/oidb/icerik/denklik_lisans.pdf. After you come to our Directorate for registration and submit the documents, you can contact your Faculty to find out when you can start your education.

2.7. FREQUENTLY ASKED QUESTIONS ABOUT INTERNATIONAL STUDENTS THAT CAME WITH THE STUDENT EXCHANGE PROGRAM

1.) Where should I apply for the student exchange program?

In order to apply within the scope of the student exchange program, you must apply to the International Relations Coordinator (<https://international.ege.edu.tr/>).

2.) Where can I renew my registration as a student exchange student?

For the registration renewal process, the course selection is made with the help of the academic advisor by applying to the faculty/institute student affairs.

3.) Where can I get my student certificate as an exchange student?

The student certificate is given by the International Relations Coordinator.

4.) Where can I get a student ID card as an exchange student?

Student ID card is issued by the Directorate of Student Affairs after registration.

2.8. FREQUENTLY ASKED QUESTIONS ABOUT HOUSING, RESIDENCE, HEALTH PROCEDURES OF INTERNATIONAL STUDENTS

1.) What do I need to do to get a residence permit?

International students studying at our university with or without a scholarship have to start their residence permit procedures within one month after entering Turkey. In order to obtain a residence permit, the appointment date and time must be obtained from the website www.goc.gov.tr. The necessary documents can be found on the website of the Migration Administration above.

2.) How can incoming students meet their accommodation needs within the framework of the international student quota?

In our university, students meet their accommodation needs with their own means. There is a state dormitory (Zübeyde Hanım Girls' Dormitory), a semi-private dormitory (Öğrenci Köyü) and a private dormitory within the Ege University campus. In addition, there are many dormitories and accommodation opportunities around the campus.

3.) How can I benefit from health services during my education?

Our international students can benefit from the State's General Health Insurance provided that they apply to our University within three months from the first registration date. International students must apply to the Bornova Naci Şahin Social Security Center, the district where our University is located, in order to benefit from the general health insurance.

Students who do not apply within 3 months lose their right to get general health insurance during their education. Students can also get private health insurance if they wish. Students who have general health insurance can benefit from health services within the scope of our University hospital and Mediko.

4.) Who can I contact about the problems I will encounter during my education?

You can solve the problems you may encounter during your education life with your school's student affairs units, your advisors and student representatives. You can also apply to Ege University Health, Culture and Sports Department for guidance, social activities, scholarships, eating and drinking and other similar issues.

2.9. FREQUENTLY ASKED QUESTIONS ABOUT LATERAL TRANSFER OF INTERNATIONAL STUDENTS

1.) Is it possible to transfer from your university to another university or from another university to your university?

In order to transfer from our university to other universities, you must meet the conditions of the university you will transfer to. You can contact the university you want to transfer to.

For lateral transfer conditions to our university, students can review the Transfer Guide in the Guides section under the heading Students on the www.oidb.ege.edu.tr web page. In addition, students are required to follow the Lateral Transfer announcements that will be announced on our website.

2.10. FREQUENTLY ASKED QUESTIONS ABOUT GRADUATION/DISENROLLMENT OF INTERNATIONAL STUDENTS

1.) I was disenrolled/I graduated. Can I get back the documents I submitted at registration?

All students who were disenrolled, disenrolled themselves or graduated can receive the documents they submitted during registration to our university from the Directorate of Student Affairs themselves.

2.) Why should I be a member of the Türkiye Mezunları Portalı at the graduation stage?

You will join the family of Türkiye Mezunları of approximately 150 thousand people in approximately 165 countries of the world. Its aim is to encourage the solidarity of our graduates among themselves, to strengthen the communication between alumni and alumni associations in different countries, to strengthen their relations with Turkey and Turkish, and to ensure the cooperation of our graduates with the public institutions and private sector of our country.

Membership to the portal includes various activities such as organizing alumni meetings, providing employment opportunities for graduates, conducting training programs that will contribute to their career development, organizing Turkey Alumni Awards program, supporting the establishment and activities of alumni associations by the Presidency for Turks Abroad and Related Communities.

In order to become a member, our student, who has become a graduate, fills in the "Türkiye Mezunları Information Form" on the website www.turkiyemezunlari.gov.tr and delivers the form to the college/faculty/institute student affairs.