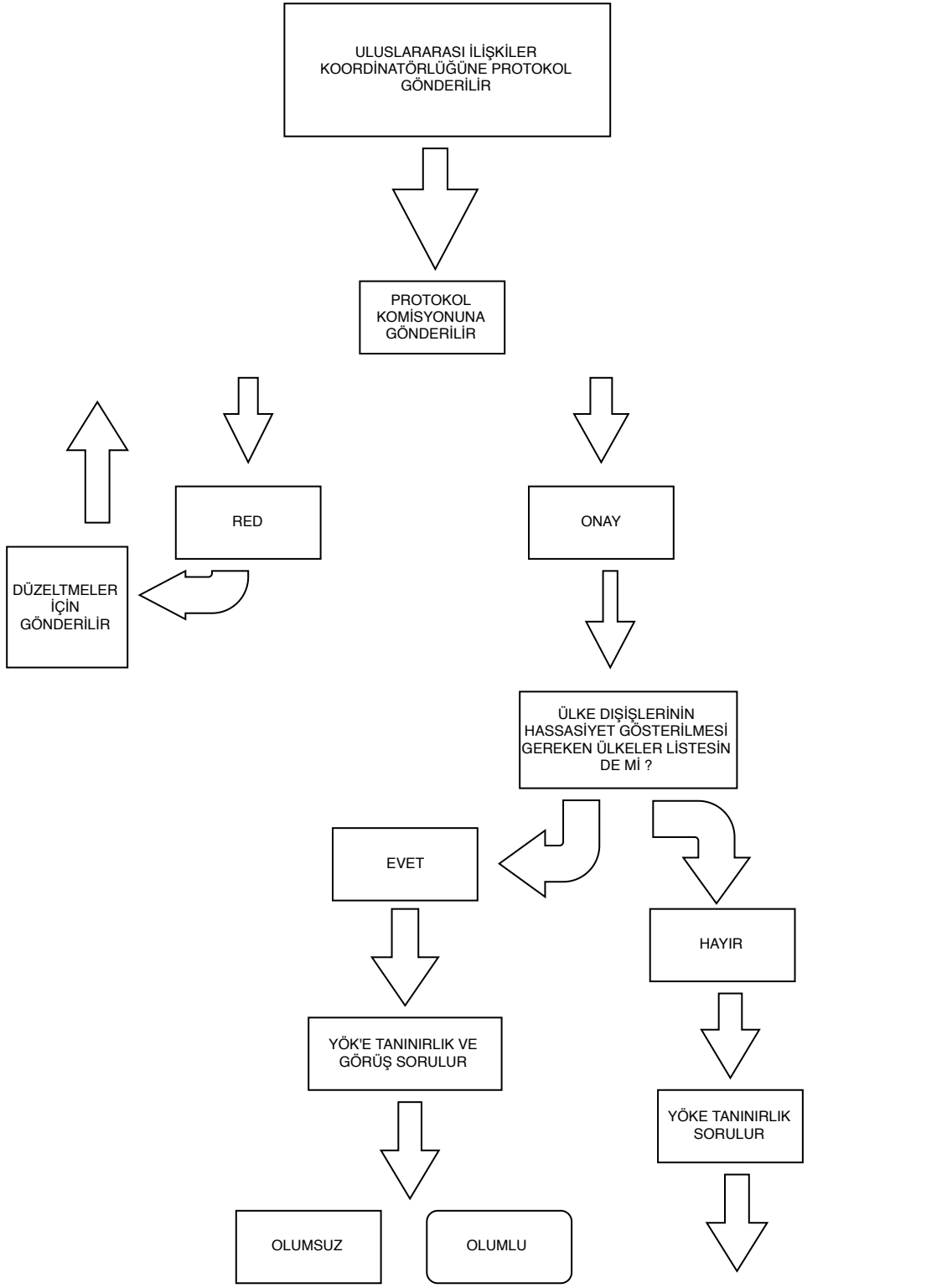
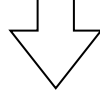


İKİLİ İŞBİRLİĞİ PROTOKOLLERİ ONAY AKIŞ ŞEMASI

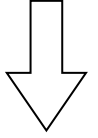
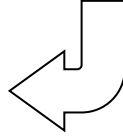




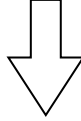
OLUMLU

OLUMSUZ

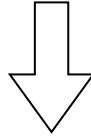
ANLAŞMA İLGİLİ BİRİM
TARAFINDAN KARŞI TARAF
İMZALATILMAK ÜZERE
GÖNDERİLİR



ANLAŞMA İMZALANMAZ



İMZALANAN ANLAŞMA
REKTÖRLÜĞE SUNULMAK ÜZERE
ULUSLARARASI İLİŞKİLER
KOORDİNATÖRLÜĞÜNE İLETİLİR



İMZALANAN ANLAŞMA STRATEJİ DAİRE
BAŞKANLIĞINDA ARŞİVLENİR